



North Sound ACH

# Reimagining Data Equity Cohort

*Advancing a Just and Inclusive Culture series*

October 19, 2022



# Land Acknowledgement

We begin by acknowledging, with humility, that the land where we are today is the territory of the People of the Salish Sea.

Their presence is imbued in the waterways, shorelines, valleys and mountains of the traditional homelands of the Coast Salish People.

Since Time Immemorial...

Visit <https://native-land.ca/> to learn more about the Indigenous land where you live, work, and play.

# Our Time Together

- Our Network Learning Approach
- Introducing the Equity Cohort
- Panel Discussion: Reimagining Data
- Small Group Connections and Reflection
- Closing and Next Steps

# Monthly Learning Sessions

## *Advancing a Just and Inclusive Culture*

Sessions that bring the entire network together to deepen cross-cohort connections, strengthen our community, and share experiences.

- Explore local, regional, national models
- Cohort bright spots (make learning and progress visible)
- Open invitation for growing our tables



# Living into Our Shared Beliefs

- All community members deserve to experience mental, social, physical, financial, and spiritual well-being.
- Inherited legacies of systemic racism have perpetuated trauma and exclusion, particularly among Indigenous populations and communities of color.
- Together we can create new legacies – and the conditions — that ensure a sense of belonging for all people who call this region home.
- We are accountable, to each other and to the well-being of future generations.

# Equity Cohort

All members of the North Sound Collaborative Action Network are engaged in the Equity cohort, with all partners committed to learning, advocacy and finding ways to work in concert to advance equitable well-being across the North Sound region.

The Equity Cohort has three initial focus areas, with work groups formed to dive deeper in:

- **Equity and Racial Justice**, focused on advancing learning around belonging, and social, racial and gender justice
- **Tribal and Indigenous Learning**, to advance tribal learning and foster potential partnerships between native and non-native organizations
- **Measurable Equitable Well-Being**, focused on incorporating measures of well-being, and collecting and analyzing data to identify disparities and address biases

<https://northsoundach.communitycommons.org/cohorts/cohort-equity/>

# Who is Whatcom County?



**Total Population: 226,847**

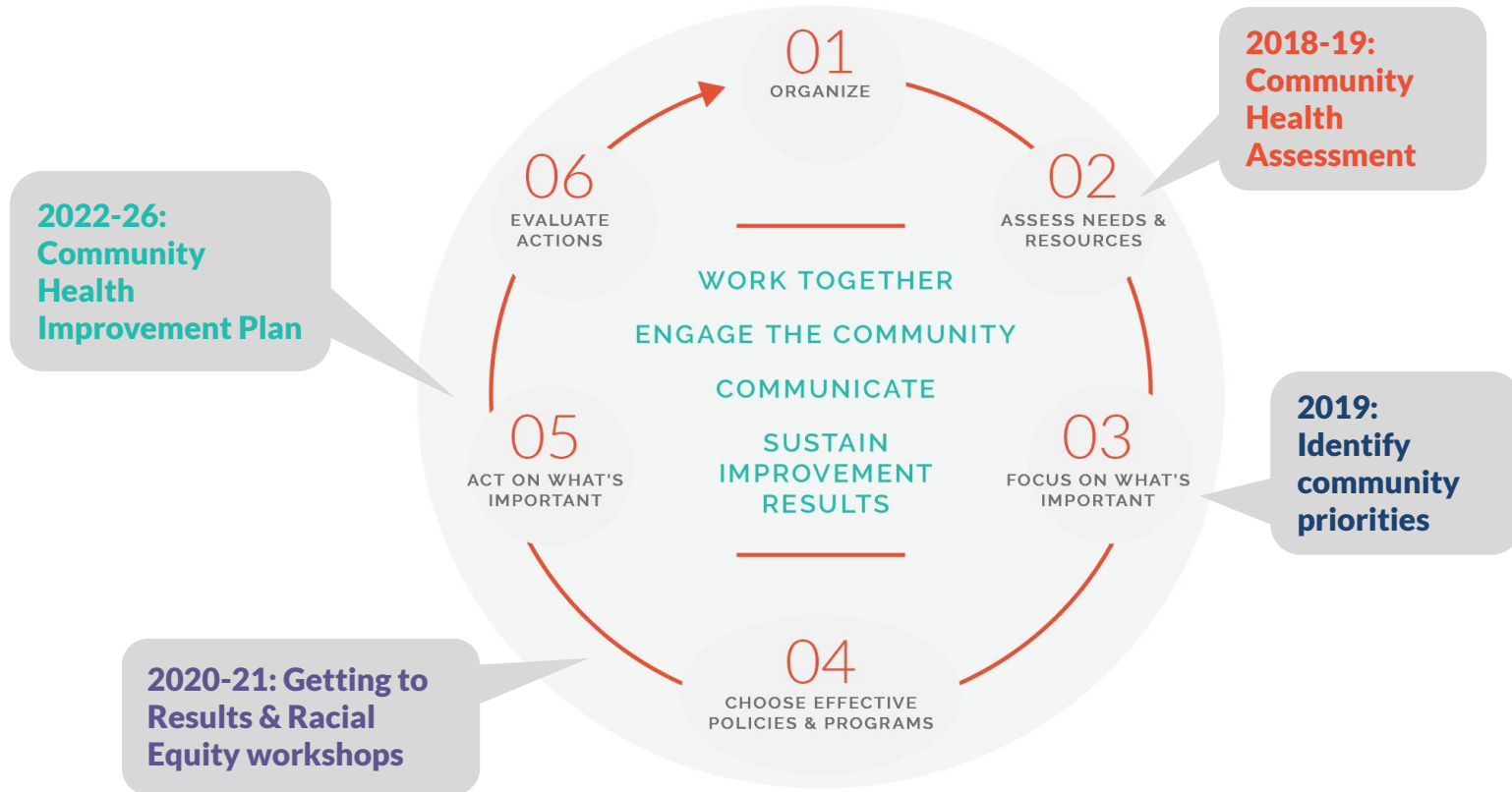
White	86.2%
Hispanic or Latine	9.8%
Asian	4.8%
Multiracial	4.0%
American Indian and Alaskan Native	3.4%
Black or African-American	1.3%
Native Hawaiian and Pacific Islander	0.3%

# *Community Engagement in Community Health Improvement*





# The Phases of Community Health Improvement

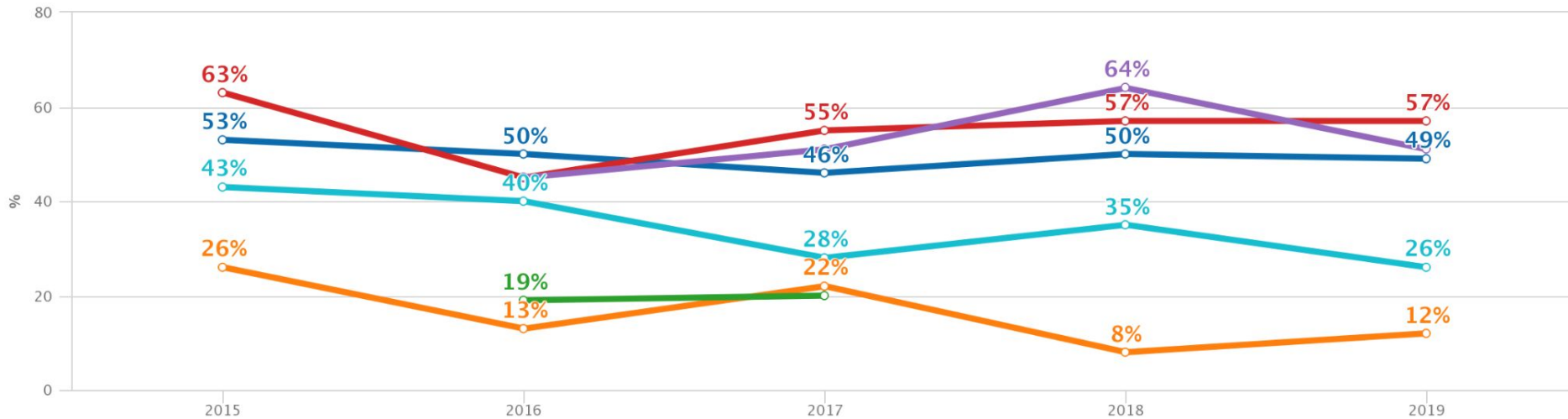


# *Using Data in Community Health Improvement*



# Turn the Curve for Early Childhood Well-Being

Indicator: Whatcom County Students: 6 domains of Kindergarten Readiness, by Race and Ethnicity



- [ECWB] Indicator: Whatcom County Students: 6 domains of Kindergarten-Readiness, by Race and Ethnicity
- % of American Indian/Alaskan Native students in Whatcom County who scored Kinder Ready across 6 developmental domains
- % of Latinx students in Whatcom County who scored Kinder Ready across 6 developmental domains
- % of African American/Black students in Whatcom County who scored Kinder Ready across 6 developmental domains
- % of White students in Whatcom County who scored Kinder Ready across 6 developmental domains
- % of students from Two or More Races in Whatcom County who scored Kinder Ready across 6 developmental domains

# Turn the Curve Centers Race and Ethnicity



*Twice as many white children enter Kindergarten ready to learn compared to children of color. Why?*

Children thrive when their parents or caregivers have the time, energy, and resources to provide nurturing care and access early learning experiences for their children. In Whatcom County, these parents or caregivers are more likely to be white.

Parents or caregivers with strong foundations of financial stability (often built up over generations) can ensure basic needs are met and access quality services for their families. In Whatcom County, this is more likely to occur for white families.

Children thrive when they grow up with a sense of safety and belonging. This happens when spaces honor their culture and relationships with systems are nurturing and trustworthy. In Whatcom County, this is more likely to occur for white children.

Systems, laws, and white supremacy culture have intentionally supported white families in accumulating wealth, resulting in inequitable opportunities for BIPOC children. Consequently, people of color disproportionately live in poverty.

Implicit biases in the system impact definitions of success, resources, decision-making, and data. In a system where white educators vastly outnumber educators of color, the implicit bias currently favors white children.

The trauma, stress, social pain, and grief associated with daily and historical incidences of racism have long-term impacts on BIPOC children, parents, caregivers, and families.

Institutions that normalize the language, behavior, and attitudes of the individuals present, create a non-judgmental space that affirms their culture and norms. In Whatcom County, this is currently happening for the children from the white dominant culture.

White-centered systems are built to keep Black, Indigenous, and People of Color from developing power and privilege.

*What's working & where do we want to go?*





# Shifting Power In Our Work



A woman with long dark hair is carrying a young child on her back. They are in a grassy field with trees in the background. The scene is bathed in the warm, golden light of a sunset or sunrise, creating a soft, hazy atmosphere. The child is wearing a striped shirt, and the woman is wearing a light-colored top. The overall mood is peaceful and intimate.

What's Next



# Resource Library

## Learning Together in the North Sound

Connect. Coordinate. Collaborate.

Search hundreds of resources

SEARCH

### What is the North Sound ACH Resource Library?

North Sound Accountable Community of Health (North Sound ACH) exists to create a just and inclusive culture and the necessary conditions for all community members to thrive. The North Sound ACH Resource Library is designed to make the wisdom, innovations, and best practices that already exist in North Sound accessible—and to link North Sound resources to national frameworks and thought partners.





# Thank You!

Please take the survey (required for Cohort partners)

*Additional questions?*

Email: **[Team@NorthSoundACH.org](mailto:Team@NorthSoundACH.org)**